

YOUR NEWEST SOLUTION TO INCREASED PRODUCTIVITY



presston™ 1000

- Pneumatic Handling
- Consistent Flow Rates
- Safe and Easy-to-Use



POSITIVE PRESSURE MANIFOLD
for Streamlined Sample Preparation

Архангельск (8182)63-90-72
Астана (7172)727-132
Астрахань (8512)99-46-04
Барнаул (3852)73-04-60
Белгород (4722)40-23-64
Брянск (4832)59-03-52
Владивосток (423)249-28-31
Волгоград (844)278-03-48
Вологда (8172)26-41-59
Воронеж (473)204-51-73
Екатеринбург (343)384-55-89

Иваново (4932)77-34-06
Ижевск (3412)26-03-58
Казань (843)206-01-48
Калининград (4012)72-03-81
Калуга (4842)92-23-67
Кемерово (3842)65-04-62
Киров (8332)68-02-04
Краснодар (861)203-40-90
Красноярск (391)204-63-61
Курск (4712)77-13-04
Липецк (4742)52-20-81

Магнитогорск (3519)55-03-13
Москва (495)268-04-70
Мурманск (8152)59-64-93
Набережные Челны (8552)20-53-41
Нижний Новгород (831)429-08-12
Новокузнецк (3843)20-46-81
Новосибирск (383)227-86-73
Омск (3812)21-46-40
Орел (4862)44-53-42
Оренбург (3532)37-68-04
Пенза (8412)22-31-16

Пермь (342)205-81-47
Ростов-на-Дону (863)308-18-15
Рязань (4912)46-61-64
Самара (846)206-03-16
Санкт-Петербург (812)309-46-40
Саратов (845)249-38-78
Севастополь (8692)22-31-93
Симферополь (3652)67-13-56
Смоленск (4812)29-41-54
Сочи (862)225-72-31
Ставрополь (8652)20-65-13

Сургут (3462)77-98-35
Тверь (4822)63-31-35
Томск (3822)98-41-53
Тула (4872)74-02-29
Тюмень (3452)66-21-18
Ульяновск (8422)24-23-59
Уфа (347)229-48-12
Хабаровск (4212)92-98-04
Челябинск (351)202-03-61
Череповец (8202)49-02-64
Ярославль (4852)69-52-93

Do More with Presston™ 1000

Streamline your 96-well plate processing for easier sample preparation with a pneumatic positive pressure manifold.

Sleek, Low Profile Design

Width: 11.8", Depth: 15", Height: 14.8"

Simple to Use

Pneumatic manifold movement reduces manual labor with more reliable extractions

Never Lose Pressure

Always maintain a tight seal between the manifold and 96-well plate

Determine Your Operating Pressure

Conveniently monitor and maintain a consistent pressure

Easily Load Samples

Moveable locator plate makes sample loading and cleaning easy

Know your Step

Simply move the "SPE Procedure Indicator" to the correct step to stay on track of your extraction.



Presston 1000
Part No.: [AH1-7033](#)



Safer Lab Environment

Use both hands to move manifold shield, ensuring enhanced safety

Designed for Greater Ease of Use and Accuracy

The Presston™ 1000 will allow you to achieve improvements in productivity without detriment to your valuable results and recovery.



Uniform Flow Rates for Better Reproducibility

Positive pressure uses a gas source to push pressure from above to consistently regulate the flow of each well, while vacuum manifolds pull the liquid from each well. If one well clears before the others when using a vacuum manifold, then the other wells have less suction being applied which can cause flow rate fluctuation yielding more variable results.

Positive pressure manifolds, like Presston 1000 reduce these inconsistencies and provide **a more accurate solution**. Less variables introduced in the SPE procedure equals **more efficient extractions**.



Safe and Easy-to-Use

The **pneumatic mechanical** movement of the manifold shield moving up and down is easily initiated by placing two hands on the manifold positioning switch. This ensures that **hands are safe** while the manifold shield moves up and down and provides **less manual work**, making Presston 1000 ergonomically efficient.



Regulate Pressure

It's simple to visually determine whether Presston 1000 is operating at **optimal pressure**. The easy display offers a convenient and accurate pressure reading to guarantee that samples are processed safely, and **results are accurate**. Two different pressure gauges are available: Low Pressure Regulator and High Pressure Regulator for whatever your analysis requires! Pressure gauges can be read in MPa, psi, and bar.



Ensure Reliability

With a fully warranty, Presston 1000 promises that it will be in **good working condition** otherwise we will replace the defective item.

Phenomenex warrants the Presston 1000 Positive Pressure Manifold against defects in materials and workmanship under normal installation, use, and maintenance for a period of 12 months following delivery.

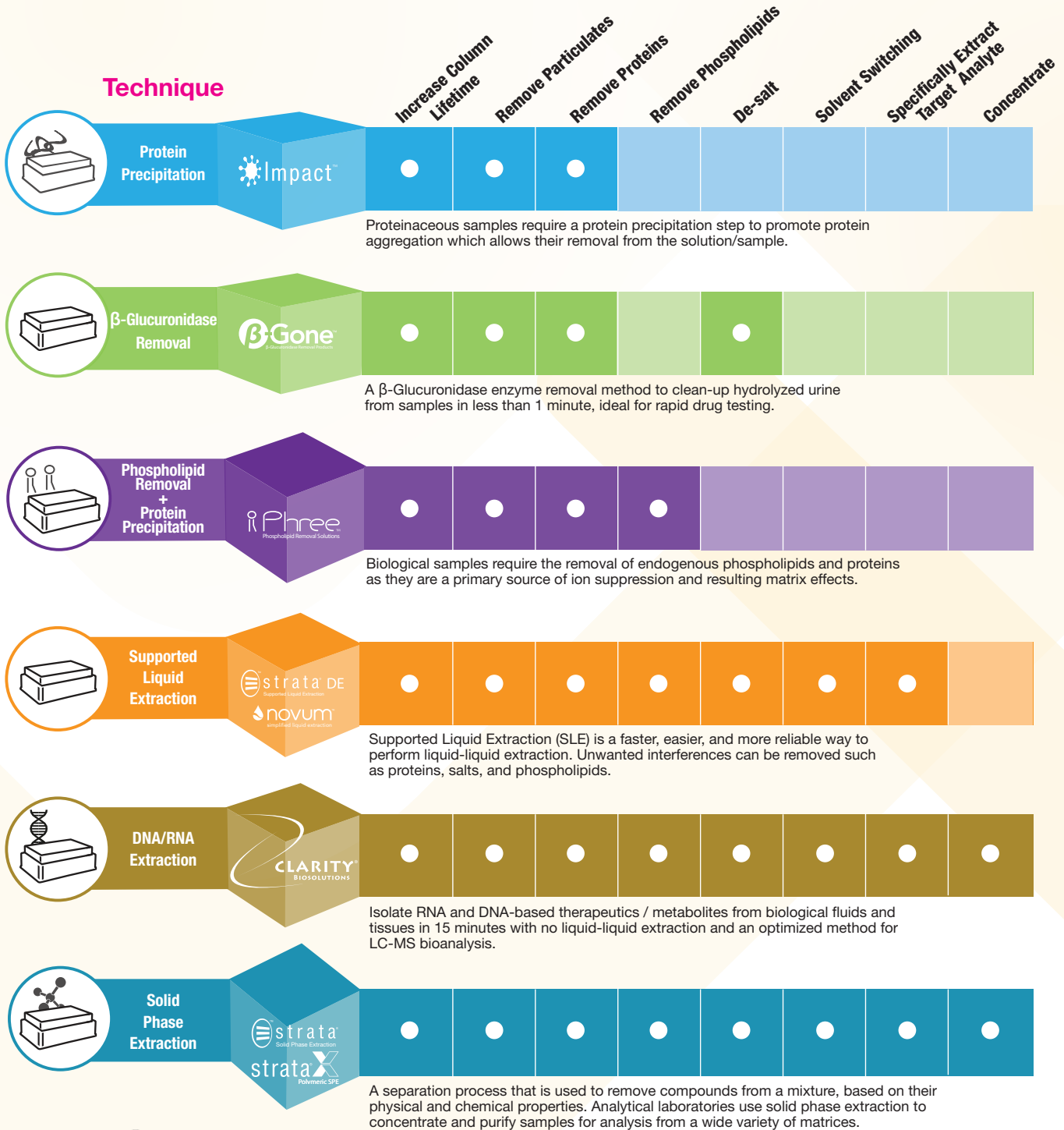
Please visit www.phenomenex.com/presstonwarranty for complete warranty information.

Sample Preparation Compatibility with Presston 1000

A full selection of Phenomenex 96-well plate sample preparation products available to use with Presston 1000 that rely on high recoveries and well-to-well uniformity.

Advantages

Technique



Proteinaceous samples require a protein precipitation step to promote protein aggregation which allows their removal from the solution/sample.

A β-Glucuronidase enzyme removal method to clean-up hydrolyzed urine from samples in less than 1 minute, ideal for rapid drug testing.

Biological samples require the removal of endogenous phospholipids and proteins as they are a primary source of ion suppression and resulting matrix effects.

Supported Liquid Extraction (SLE) is a faster, easier, and more reliable way to perform liquid-liquid extraction. Unwanted interferences can be removed such as proteins, salts, and phospholipids.

Isolate RNA and DNA-based therapeutics / metabolites from biological fluids and tissues in 15 minutes with no liquid-liquid extraction and an optimized method for LC-MS bioanalysis.

A separation process that is used to remove compounds from a mixture, based on their physical and chemical properties. Analytical laboratories use solid phase extraction to concentrate and purify samples for analysis from a wide variety of matrices.



Presston 1000 is compatible with standard 96-well plates and collection plates, including microelution plates and can even be used with a tube holder (Phenomenex Part No.: AH0-9055) for tabless 1 mL tubes. Simply change the manifold spacers to fit correctly!

What to Expect in Your Presston 1000 Product Box

Included in the unit is the 96-well plate manifold, a starter kit that includes tubing, manifold spacers, a gas regulator, and collection trough which are all required for set-up, and a converter kit to accommodate different sizes of tubing.

Description	Part Number	Qty
Manifold		
Presston 1000 Postive Pressure Manifold, 96-Well Plate	AH1-7033	1

Description	Qty
Starter Kit	
Gas Regulator	1
Screws for Gas Regulator	2
Screwdriver	1
Manifold Spacer Small	2
Manifold Spacer Large	1
Tubing (6 mm)	3
Waste Collection Trough	1

Description	Qty
Converter Kit	
Straight Diameter Joint (6 mm - 4 mm)	1
Straight Diameter Joint (8 mm - 6 mm)	1
Straight Diameter Joint (10 mm - 6 mm)	1
Bent Diameter Joint Regulator Valve	1
Quick-Fitting Straight Joint Plug C	1
Quick-Fitting Straight Joint Plug D	1
Barbed to Male Tube Fitting (1/4")	1
Tubing (10 mm)	1



Presston 1000
Part No.: [AH1-7033](#)

Included in all boxes:

Starter Kit



Converter Kit



Positive Pressure Manifold for Streamlined Sample Preparation

Архангельск (8182)63-90-72
Астана (7172)727-132
Астрахань (8512)99-46-04
Барнаул (3852)73-04-60
Белгород (4722)40-23-64
Брянск (4832)59-03-52
Владивосток (423)249-28-31
Волгоград (844)278-03-48
Вологда (8172)26-41-59
Воронеж (473)204-51-73
Екатеринбург (343)384-55-89

Иваново (4932)77-34-06
Ижевск (3412)26-03-58
Казань (843)206-01-48
Калининград (4012)72-03-81
Калуга (4842)92-23-67
Кемерово (3842)65-04-62
Киров (8332)68-02-04
Краснодар (861)203-40-90
Красноярск (391)204-63-61
Курск (4712)77-13-04
Липецк (4742)52-20-81

Магнитогорск (3519)55-03-13
Москва (495)268-04-70
Мурманск (8152)59-64-93
Набережные Челны (8552)20-53-41
Нижний Новгород (831)429-08-12
Новокузнецк (3843)20-46-81
Новосибирск (383)227-86-73
Омск (3812)21-46-40
Орел (4862)44-53-42
Оренбург (3532)37-68-04
Пенза (8412)22-31-16

Пермь (342)205-81-47
Ростов-на-Дону (863)308-18-15
Рязань (4912)46-61-64
Самара (846)206-03-16
Санкт-Петербург (812)309-46-40
Саратов (845)249-38-78
Севастополь (8692)22-31-93
Симферополь (3652)67-13-56
Смоленск (4812)29-41-54
Сочи (862)225-72-31
Ставрополь (8652)20-65-13

Сургут (3462)77-98-35
Тверь (4822)63-31-35
Томск (3822)98-41-53
Тула (4872)74-02-29
Тюмень (3452)66-21-18
Ульяновск (8422)24-23-59
Уфа (347)229-48-12
Хабаровск (4212)92-98-04
Челябинск (351)202-03-61
Череповец (8202)49-02-64
Ярославль (4852)69-52-93

www.phenomenex.nt-rt.ru || pxp@nt-rt.ru